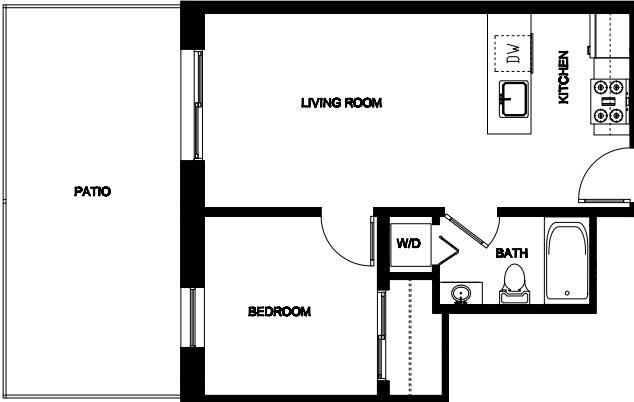


1 BEDROOM PRESALE PRICING

1412 CHAPIN ST NW

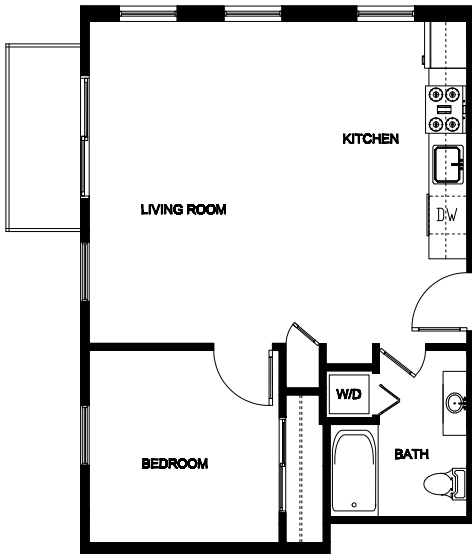
CHAPINROW



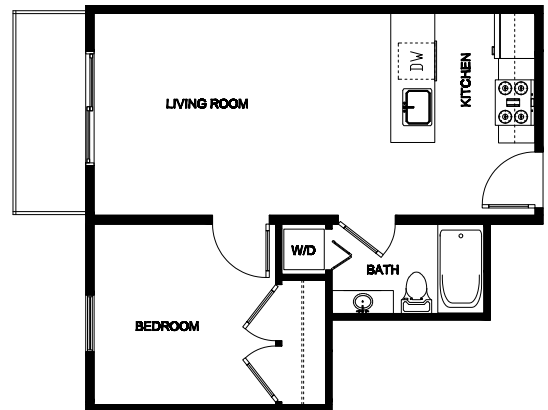
005 1 bed, 1 bath with patio offered at \$399,900

Ideal city living defined.

- Sweeping city views
- Steps to the DC's finest shops and restaurants
- Sleek modern finishes
- Bosch appliances
- Open floor plans with high ceilings
- Wide plank hardwood floors
- Private outdoor spaces
- Parking and storage available



101 1 bed, 1 bath with balcony offered at \$479,900



105 1 bed, 1 bath with balcony offered at \$449,900

* Floor plan measurements are approximate and are for illustrative purposes only. Pricing and availability are subject to change without notice.

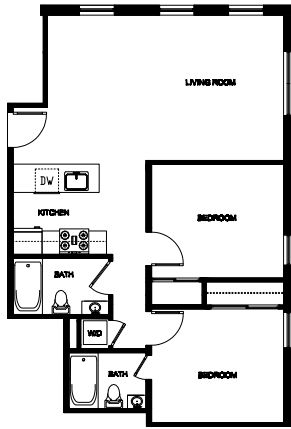
202-243-7777

www.CHAPINROW.com

2 BEDROOM PRESALE PRICING

1412 CHAPIN ST NW

CHAPINROW



102 2 bed, 2 bath
offered at \$579,900

Ideal city living defined.

Sweeping city views

Steps to the DC's finest shops
and restaurants

Sleek modern finishes

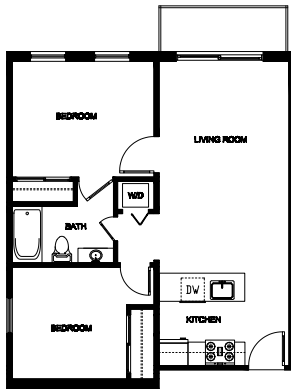
Bosch appliances

Open floor plans with high ceilings

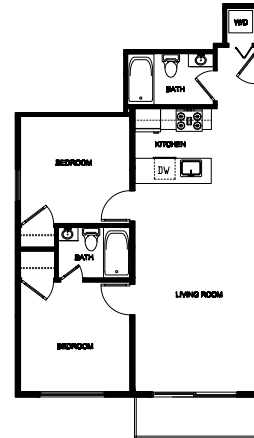
Wide plank hardwood floors

Private outdoor spaces

Parking and storage available



201 2 bed, 1 bath with balcony
offered at \$579,900



205 2 beds, 2 bath with balcony
offered at \$599,900

* Floor plan measurements are approximate and are for illustrative purposes only.
Pricing and availability are subject to change without notice.

202-243-7777

www.CHAPINROW.com